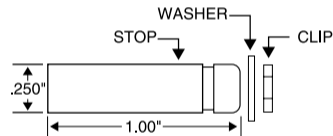
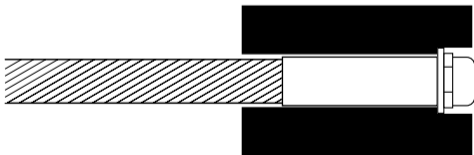


# ULTRA-TEC® "Clip-on" STOP

For use in posts with cables cut and fittings attached at the factory. No field swaging is required. A special clip and washer secure the Stop to the end post. Used on the non-tensioning end of the cable. An Adjust-A-Jaw®, Adjust-A-Body™ or Invisiware® Receiver is used on the opposite end to tension the cable. Available for 1/8" and 3/16" diameter cable only. Includes Stop, Washer and Clip. Determine hardware for tensioning end and check with the factory to determine cable lengths to be provided with swaged fittings.



## HOW IT WORKS



## TYPE 316 STAINLESS STEEL

CABLE DIA.	FOR USE WITH	PART NO.	WASHER DIA.
1/8"	WOOD POST	<b>COS-4</b>	59/64" (.922")
3/16"	WOOD POST	<b>COS-6</b>	
1/8"	METAL POST	<b>COS-4M</b>	15/32" (.468")
3/16"	METAL POST	<b>COS-6M</b>	