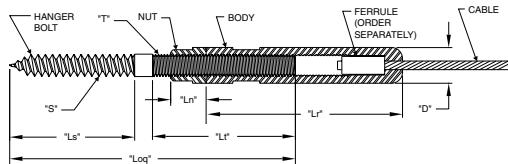


ADJUST-A-BODY™ WITH HANGER BOLT TENSIONER

Similar to our regular Adjust-A-Jaw® Tensioner, the Adjust-A-Body™ with Hanger Bolt screws right into your wooden end post, to provide a sleek tensioning device that is easy to install and easy to adjust.



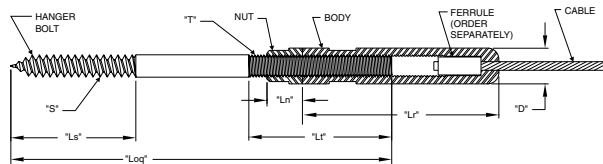
TYPE 316 STAINLESS STEEL

CABLE DIA.	PART NUMBER	*USE WITH FERRULE NO.	"S"	"T"	"Ls"	"Lt"	"Loq"	"Ln"	"Lr"	"D"	DRILL SIZE REQ.	MIN. NOMINAL TIMBER SIZE
1/8"	A-JB6	F-4	5/16"	5/16-24 L.H.	1.50"	2.00"	3.75"	.375"	2.75"	.500"	13/64"	4 x 4
3/16"		F-6										
1/4"	A-JB8	F-8	7/16"	7/16-20 L.H.	2.00"	2.50"	4.75"	.500"	3.00"	.625"	5/16"	

*Order Ferrule Separately.

ADJUST-A-BODY™ WITH EXTENDED HANGER BOLT TENSIONER

Same as the above tensioner, except the hanger bolt is 1-1/2" longer, allowing you to penetrate deeper into the post or wall if necessary. Available for use with 1/8" and 3/16" cable.



TYPE 316 STAINLESS STEEL

CABLE DIA.	PART NUMBER	*USE WITH FERRULE NO.	"S"	"T"	"Ls"	"Lt"	"Loq"	"Ln"	"Lr"	"D"	DRILL SIZE REQ.	MIN. NOMINAL TIMBER SIZE
1/8"	A-JB6-L	F-4	5/16"	5/16-24 L.H.	1.50"	2.00"	5.25"	.375"	2.75"	.500"	13/64"	4 x 4
3/16"		F-6										

*Order Ferrule Separately.