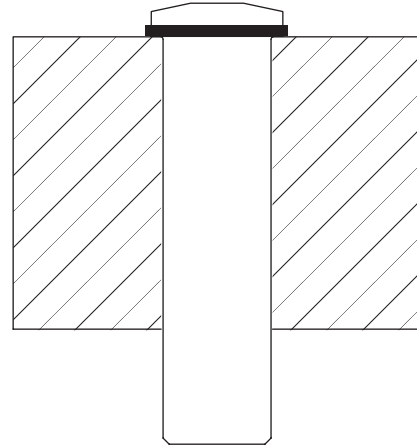
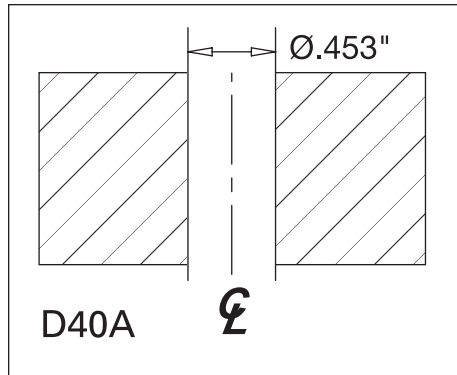


BORING INSTRUCTIONS

PUSH-LOCK™ and PULL-LOCK™ STOP-END FITTINGS

Used with flat bar or steel plate.

Cable Dia: 1/8" and 3/16"

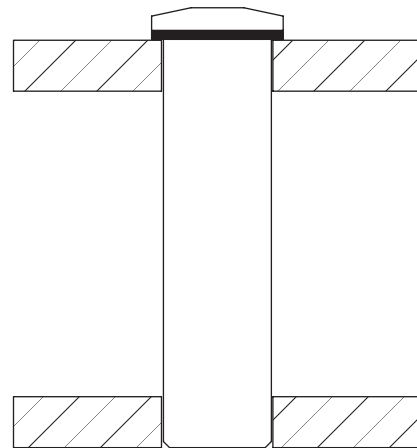
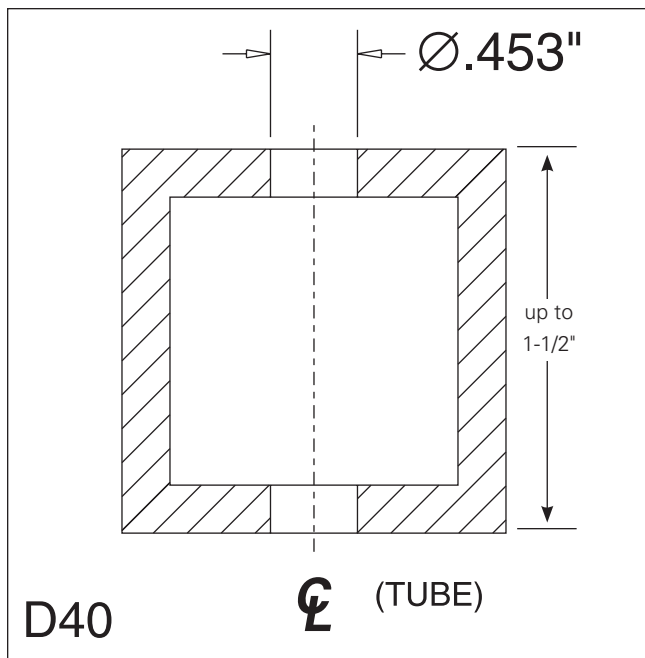


Push-Lock™ or Pull-Lock™ fitting used with flat bar or steel plate.

PUSH-LOCK™ and PULL-LOCK™ STOP-END FITTINGS

Used with square or rectangular tubing up to 1-1/2" in through direction. We recommend a minimum 1/4" wall.

Cable Dia: 1/8" and 3/16"



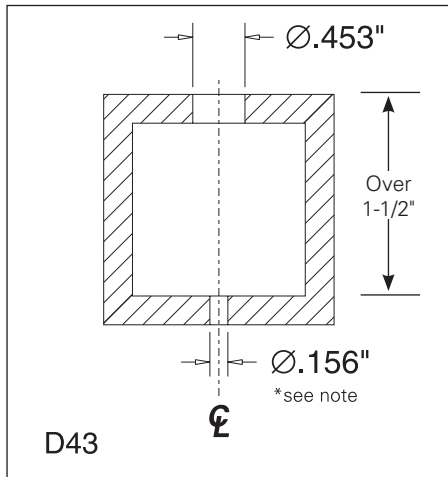
Push-Lock™ or Pull-Lock™ fitting used with square or rectangular tubing.

BORING INSTRUCTIONS

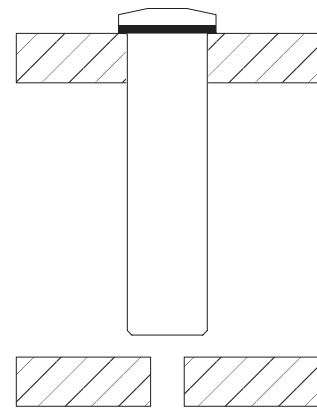
PUSH-LOCK™ and PULL-LOCK™ STOP-END FITTINGS

Used with square or rectangular tubing over 1-1/2" outside-to-inside tube dimension in through direction. We recommend a minimum 1/4" wall.

Cable Dia: 1/8" *see note if using grommets



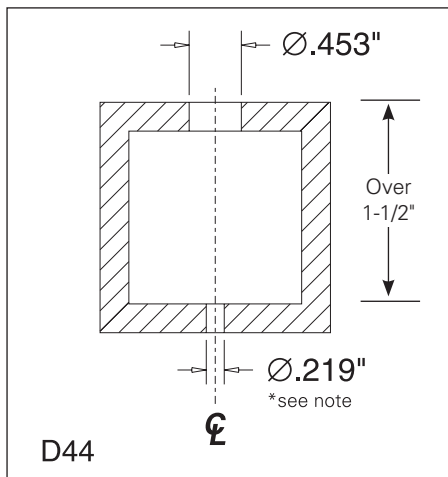
*Note: If grommets are being used, hole through which cable passes should be .250\".



PUSH-LOCK™ and PULL-LOCK™ STOP-END FITTINGS

Used with square or rectangular tubing over 1-1/2" outside-to-inside tube dimension in through direction. We recommend a minimum 1/4" wall.

Cable Dia: 3/16" *see note if using grommets



*Note: If grommets are being used, hole through which cable passes should be .250\".

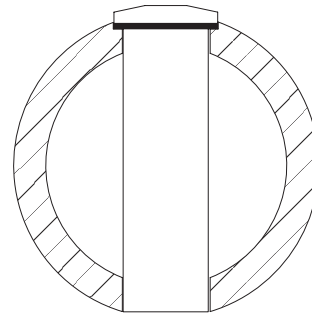
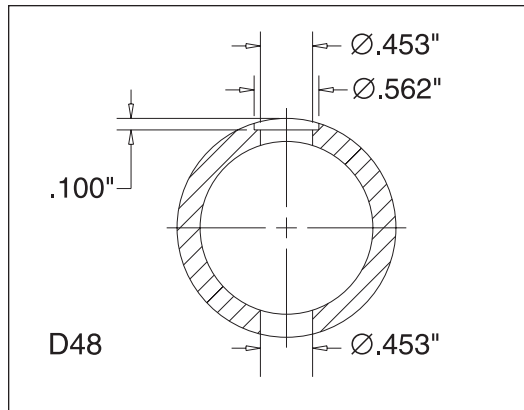
Push-Lock™ or Pull-Lock™ fitting used with square or rectangular tubing.

BORING INSTRUCTIONS

PUSH-LOCK™ and PULL-LOCK™ STOP-END FITTINGS

Used with minimum SC80 1-1/4" round pipe or round steel tubing with comparable dimensions.

Cable Dia: 1/8" and 3/16"



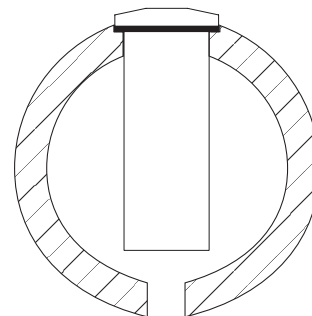
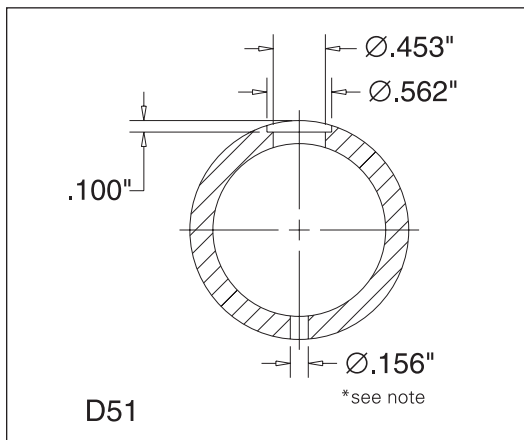
Push-Lock™ or Pull-Lock™ fitting used with round pipe or tubing.

PUSH-LOCK™ and PULL-LOCK™ STOP-END FITTINGS

Used with minimum SC80 1-1/2" or larger round pipe or round steel tubing with comparable dimensions.

Cable Dia: 1/8"

*see note if using grommets



Push-Lock™ or Pull-Lock™ fitting used with 1-1/2" or larger diameter round pipe or comparable tubing.

*Note: If grommets are being used, hole through which cable passes should be $.250''$.

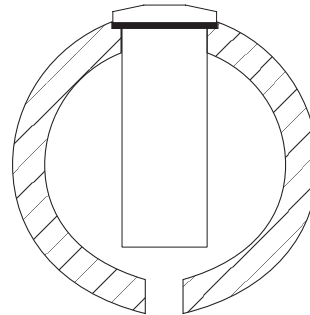
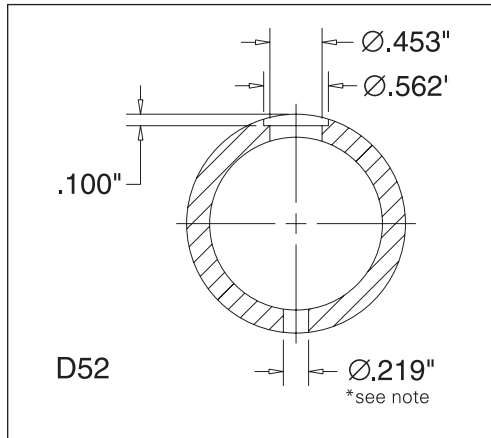
BORING INSTRUCTIONS

PUSH-LOCK™ and PULL-LOCK™ STOP-END FITTINGS

Used with minimum SC80 1-1/2" or larger round pipe or round steel tubing with comparable dimensions.

Cable Dia: 3/16"

*see note if using grommets



Push-Lock™ or Pull-Lock™ fitting used with 1-1/2" or larger diameter round pipe or comparable tubing.

*Note: If grommets are being used, hole through which cable passes should be .250".