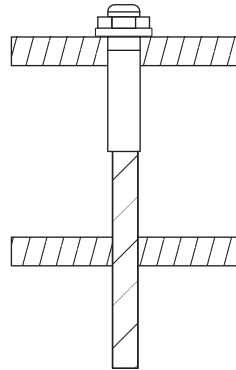
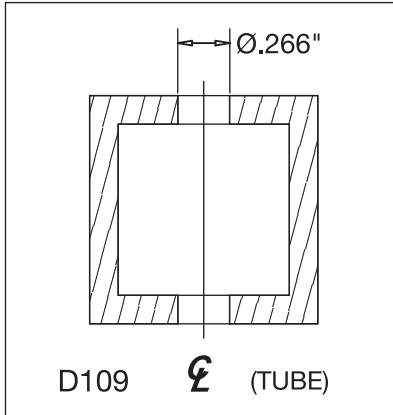


BORING INSTRUCTIONS

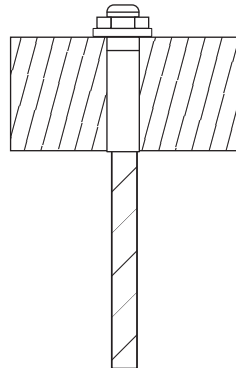
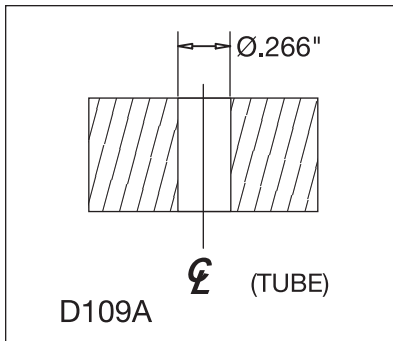
INVISIWARE® CLIP-ON STOP

Used with square or rectangular structural steel tubing.
We recommend a minimum 1/4" wall.



Invisiware® Clip-on Stop with square or rectangular structural steel tubing.

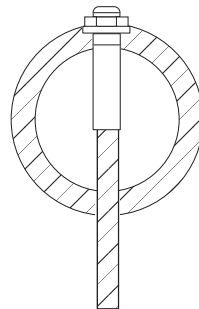
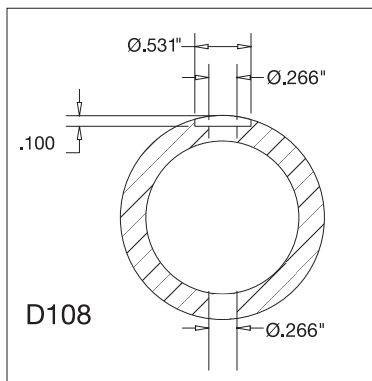
Used with flat bar.



Invisiware® Clip-on Stop with flat bar.

Used with minimum **SC80 round pipe or round steel tubing.**

If using round steel tubing, wall thickness should be at least comparable to schedule 80 pipe.



Invisiware® Clip-on Stop with round pipe or steel tubing.