

RECEIVERS WITH PUSH-LOCK™ STUD

Similar to our Invisiware® receivers, but when used with Push-Lock™ studs there is no need to swage the threaded stud onto the cable. Receivers with Push-Lock™ swageless studs can be used with any fitting on the other end, but **when used with our other swageless fittings, both ends can be put on the cable by hand** without any swaging or special tools.

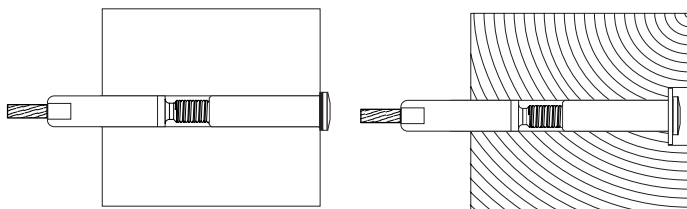
Push-Lock™ studs are designed for use with 1x19 L.H. lay strand only. Push the cable into the Push-Lock™ swageless stud, where it will be securely held inside the fitting. The receiver is female-threaded to accept the male-threaded end of the fitting. The head of the receiver is broached for an Allen wrench. To tension the cable, use an Allen wrench to rotate the receiver around the threaded end of the stud.



FOR LEVEL RUNS

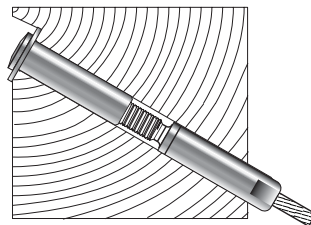
Receivers with Push-Lock™ studs rest in a hole inside the end post. Pipe ends are counterbored, so the full

perimeter of the screw cap head rests on a flat surface in the pipe. The head rests on the outside wall of a flat-sided metal post. A plastic washer is included and acts as a scratch-resistant barrier between the screw cap head and the metal post. For wood applications, a larger diameter washer is needed to distribute the load over a wider surface. For wood, also order part No. 7/16 SAE stainless steel washer.

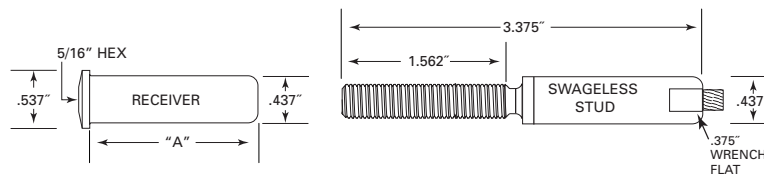
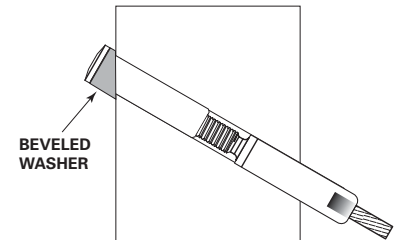


FOR STAIRS OR SEVERE PITCHES

With wood posts, you need to counterbore a 1" diameter hole at an angle, to accept the over-sized stainless steel washer that distributes the load over a wider surface than is required with a metal post.



Special stainless steel beveled washers let you use Push-Lock™ tensioners on stairs or severe pitches with flat-sided metal posts. (Not offered for pipe or round tubing.)



INVISIWARE® RECEIVERS

Invisiware® receivers are made of type 316 stainless steel.

Push-Lock™ studs are made of type 316 stainless steel,

with the exception of internal components that are made of other types of stainless steel.

ORDER SWAGELESS STUD SEPARATELY

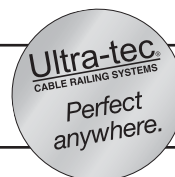
CABLE DIA.	USE WITH SWAGELESS STUD NO.	A = LENGTH OF RECEIVER BODY							
		1.582"	1.812"	2.030"	2.301"	2.375"	2.530"	3.030"	3.5625"
1/8"	PLST-4	R-6-12	R-6-22	R-6-32	R-6-42	R-6-72	R-6-82	R-6-52	R-6-62

All Ultra-tec® hardware is manufactured in the United States of America.

1-800-851-2961 ■ 775-885-1443 ■ Fax 775-885-2734

52 Heppner Drive ■ Carson City, NV 89706

E-mail: info@ultra-tec.com Website: www.ultra-tec.com



Ultra-tec®
CABLE RAILING SYSTEMS