

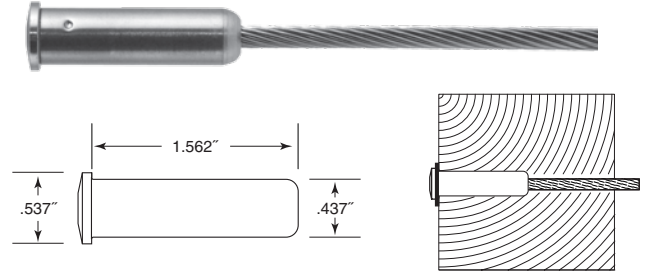
PUSH-LOCK™ STOP-END FITTINGS

Push-Lock™ fittings are designed for use with 1x19 L.H. lay strand only. They can be used with any tensioning device on the other end... but **when used with our swageless tensioners, both ends can be put on the cable by hand** without any swaging or special tools.

You can order your cables with a tensioner already on one end or you can install a tensioner on one end on site. Attach the tensioner on one end post then cut the cable to length. Slip the Push-Lock™ fitting into the other end post or, using the style with a threaded eye, mount it to a tab on the outside of the post. Push the cable into the Push-Lock™ fitting, tension the cable, and you're done!

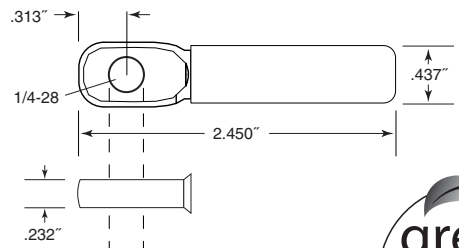
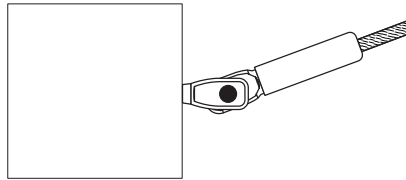
FOR LEVEL RUNS

The PL-4 Push-Lock™ fittings (with rounded heads) are used on level runs. They rest in a hole in the end post. When used with an end post 1-1/2" or more in thickness, **the Push-Lock™ fitting with a rounded head is hidden inside the end post**, with only the head exposed on the outside of the post. Pipe ends are counterbored, so the full perimeter of the head will rest on a flat surface in the pipe. A plastic washer is included and acts as a scratch resistant barrier between the Push-Lock™ fitting and a metal post. The head rests on the outside wall of a flat-sided metal post or on a stainless steel washer on a wooden post. For wood applications, also order 7-16SAE washer.



FOR STAIRS OR SEVERE PITCHES

PL-TE4 Push-Lock™ fittings with threaded eye ends are for use on stairs. They attach to a wood end post with a Lag Eye. See the drawing to determine how to interface this fitting with a metal end post or use our Fixed Tab or Threaded Tab. Mount with an SC-6 screw.



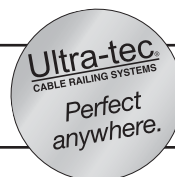
Push-Lock™ fittings are made of type 316 stainless steel, with the exception of internal components that are made of other types of stainless steel. DESIGNED FOR USE WITH 1X19 L.H. LAY STRAND ONLY

CABLE DIA.		FRAME OPTIONS		USE WITH SCREW NO.	FOR WOOD, USE WITH		METAL RAILINGS MOUNTING OPTIONS
		1-1/2" TUBE or 1-1/4" PIPE	OTHER FRAMES		WASHER NO.	LAG EYE NO.	
1/8"	For Flat Runs	PL-4-12*	PL-4	NA	7/16SAE	NA	NA
	For Stairs	PL-TE4	PL-TE4	SC-6	NA	LE-6	Click here to view mounting options.

*For appearance, ends are flat (rather than rounded) on PL-4-12 for use with 1-1/2" tubes and 1-1/4" pipe.

All Ultra-tec® hardware is manufactured in the United States of America.

1-800-851-2961 ■ 775-885-1443 ■ Fax 775-885-2734
 52 Heppner Drive ■ Carson City, NV 89706
 E-mail: info@ultra-tec.com Website: www.ultra-tec.com



Ultra-tec®
 CABLE RAILING SYSTEMS