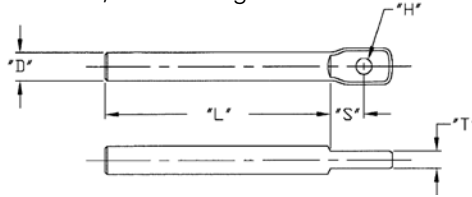




## FIXED TAB

The Fixed Tab is a frame component. The Fixed Tab is cut to length if necessary and welded into one of our standard end posts to facilitate the use of a Fixed Jaw or an Adjust-A-Jaw® or Adjust-A-Body® tensioner, or Push-Lock™ fitting with threaded eye. After the Fixed Tab is welded into the outside wall of the end post, the welded surface is ground to its original contour, thus hiding the weld.



### AVAILABLE IN CARBON STEEL AND STAINLESS STEEL

CABLE DIA.	PART NUMBER	"D"	"H"	"S"	"T"	"L"
1/8"	F-T6-5*	.375"	.265"	.44	.233"/.229"	2.94"
3/16"						
1/4"	F-T8-5*	.562"	.390"	.68	.295"/.285"	2.94"

\*To specify add "A" for Carbon Steel or "B" for Type 304 Stainless Steel

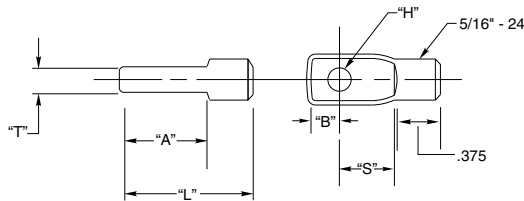
**GREEN**

These products contain at least 65% recycled content, qualifying for LEED® credit.

## INVISIWARE® THREADED TAB



The Threaded Tab is screwed into the inside wall of an end post for use in mounting a Fixed Jaw or Adjust-A-Jaw® or Adjust-A-Body® tensioner, or Push-Lock™ fitting with threaded eye.



### AVAILABLE IN TYPE 316 STAINLESS STEEL

CABLE DIA.	PART NUMBER	USE WITH ADJUST-A-JAW®, ADJUST-A-BODY® OR FIXED JAW FITTING	"H"	"S"	"T"	"A"	"B"	"L"
1/8"	TT-6B	A-J62	.265"	.500"	.233"/.229"	.813"	.313"	1.250"
3/16"		A-JTE6 F-J62						
1/4"	TT-8B	A-J82	.390"	.700"	.295"/.285"	1.250"	.563"	1.687"
5/16"		A-J122						
3/8"		A-JTE8 F-J82 F-J122						

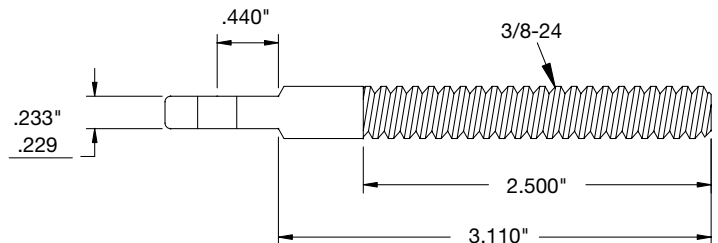
## INVISIWARE® EXTENDED LENGTH THREADED TAB

Extended length, same as above except there is no need to thread the hole in the end post. Cut to desired length and secure to end post with acorn nut and thread sealant.



CABLE DIA.	PART NO.	Use with S.S. Acorn Nut*
1/8"	TT-6B-L	AN-3/8-24-S
3/16"		

\*Order Acorn Nut separately.



All Ultra-tec® hardware is manufactured in the United States of America.

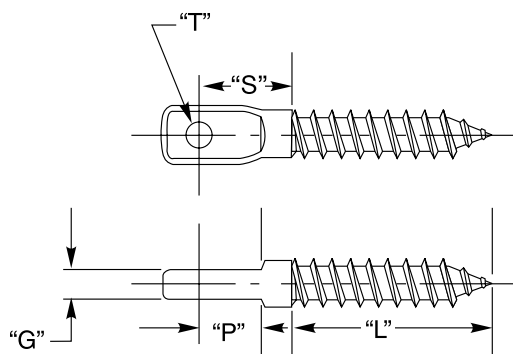
1-800-851-2961 ■ 775-885-1443 ■ Fax 775-885-2734  
52 Heppner Drive ■ Carson City, NV 89706  
E-mail: info@ultra-tec.com Website: www.ultra-tec.com



**Ultra-tec®**  
CABLE RAILING SYSTEMS

## LAG EYE

The Lag Eye fitting is used by screwing the lag threaded end of the fitting into a wooden end post. This will leave a paddle shaped eye exposed that will accommodate a Fixed Jaw, or Adjust-A-Jaw® or Adjust-A-Body® tensioner, or Push-Lock™ fitting with threaded eye.



### TYPE 304 STAINLESS STEEL

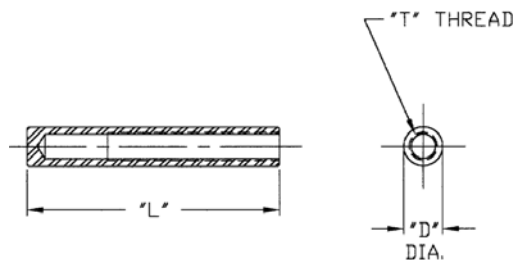
CABLE DIA.	PART NO.	"G"	"T"	"S"	"L"	"P"	DRILL SIZE REQUIRED	MIN. NOMINAL TIMBER SIZE
1/8"	LE-6	.233"/.229"	.253"	.625"	1.50"	.125"	17/64"	4 X 4
3/16"	LE-6	.233"/.229"	.253"	.625"	1.50"	.125"	17/64"	4 X 4
1/4"	LE-8	.295"/.285"	.385"	1.188"	2.00"	.500"	3/8"	4 X 4



## WELDED RECEIVER

The Welded Receiver is actually a frame component. The Welded Receiver is used much the same as an Invisiware® receiver and stud, except that the Welded Receiver does not provide for any take-up adjustment after the stud is installed into it. The Welded Receiver is cut to length if necessary and welded into the outside wall of an end post. After the Welded Receiver is welded, the surface that is welded is ground to the original contour, thus hiding the weld. The female thread within the Welded Receiver accommodates our swaging stud. This arrangement creates a completely hidden end post fitting, and

when combined with an Invisiware® receiver and stud on the opposite end of the same cable, makes up our most streamlined combination of hardware.



### AVAILABLE IN CARSON STEEL AND STAINLESS STEEL

CABLE DIA.	PART NUMBER	USE WITH STUD NO.	"D"	"T"	"L"
1/8"	W-R6-5*	S-4	.437"	5/16-24	2.82"
3/16"		S-6			
1/4"	W-R8-5*	S-8	.531"	7/16-20	2.82"

\*To specify add "A" for Carbon Steel or "B" for Type 304 Stainless Steel