

ADJUST-A-JAW® TENSIONER

The Adjust-A-Jaw® tensioner is a clevis style fitting that provides a considerable amount of take-up. The Adjust-A-Jaw tensioner has four different elements: the clevis; the body; the lock nut; and the swaging ferrule (ordered separately).

The clevis has a male thread that mates with a female thread within the body. The lock nut locks the male thread into place against the body after the assembly is properly tensioned. When the swaging ferrule is swaged onto the cable, it holds the body to the cable while also allowing the body to rotate on the cable during tensioning.

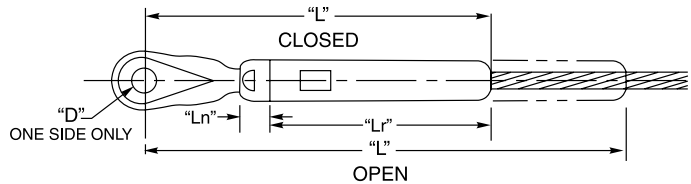
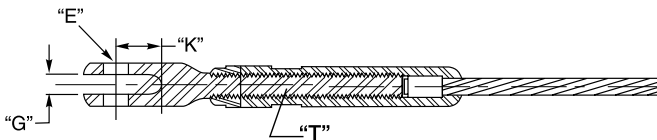
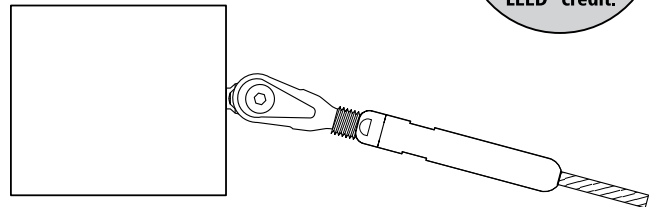
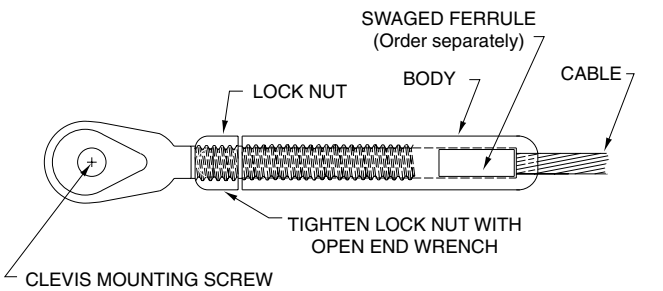
The Adjust-A-Jaw tensioner is the most streamlined clevis style adjusting mechanism available for its stated cable size. It is ideally suited for stair pitches and is also a very attractive fitting if you want the "high-tech" look of exposed stainless steel hardware on level runs as well as on stairways.



GREEN

These products contain at least 65% recycled content, qualifying for LEED® credit.

HOW IT WORKS



TYPE 316 STAINLESS STEEL

CABLE DIA.	PART NUMBER	*USE WITH FERRULE NO.	*USE WITH SCREW NO.	"D" DIA.	"E" THREAD	"G"	"K"	"L" CLOSED	"L" OPEN
1/8"	A-J62	F-4	SC-6	.260"	1/4-28	.260"	.56"	4.30"	5.99"
3/16"		F-6							
1/4"	A-J82	F-8	SC-8	.390"	3/8-24	.313"	.75"	4.87"	6.43"
5/16"	A-J122	F-10		.390"	3/8-24	.348"	.87"	6.74"	9.28"
3/8"		F-12							

*Order Ferrule and Screw Separately.