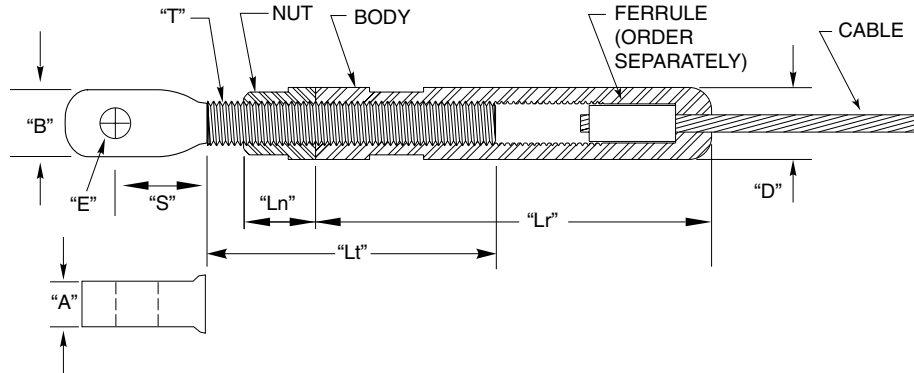


# ADJUST-A-BODY® WITH THREADED EYE TENSIONER

Similar to the Adjust-A-Jaw® tensioner, except it **costs a lot less than the clevis-style Adjust-A-Jaw® tensioner**. See the tabulated drawing to determine how to interface this fitting with your end post, or use our Fixed Tab or Threaded Tab fittings. Tension with an open-end wrench.

**GREEN**  
These products contain at least 65% recycled content, qualifying for LEED® credit.



## TYPE 316 STAINLESS STEEL

CABLE DIA.	PART NUMBER	*USE WITH FERRULE NO.	*USE WITH SCREW NO.	"E" THREAD	"A"	"B"	"S"	"T"	"Lt"	"Ln"	"Lr"	"D"
1/8"	A-JTE6	F-4	SC-6	1/4-28	.233"/.229"	.500"	.44"	5/16-24 L.H.	2.00"	.375"	2.75"	.500"
3/16"		F-6										
1/4"	A-JTE8	F-8	SC-8	3/8-24	.295"/.285"	.844"	.68"	7/16-20 L.H.	2.50"	.500"	3.00"	.625"

\*Order Ferrule and Screw Separately.

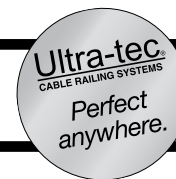
All Ultra-tec® hardware is manufactured in the United States of America.

9  
12/1/07

1-800-851-2961 ■ 775-885-1443 ■ Fax 775-885-2734

52 Heppner Drive ■ Carson City, NV 89706

E-mail: info@ultra-tec.com Website: www.ultra-tec.com



**Ultra-tec®**  
CABLE RAILING SYSTEMS